

**Industrial 10GBASE-T to 10GBASE-X SFP+
Managed Media Converter**

**IXT-900 Series
Quick Installation Guide**

Table of Contents

1. Package Contents.....	3
2. Requirements.....	4
3. Wiring DC Power Inputs.....	5
4. Starting Web Management	6
4.1 Logging in to the Industrial Managed Media Converter	6
4.2 Saving Configuration via Web Interface	8
5. Restoring Default Configuration	9
6. Customer Support	11

1. Package Contents

Thank you for purchasing PLANET Industrial 10GBASE-T to 10GBASE-X SFP+ Managed Media Converter, IXT-900 Series. The table below shows the models with the number of ports:

Number Contents	Model			
	IXT-900-1X1T	IXT-900-2X	IXT-900-2X1T	IXT-900-2X1PD
10GBASE-X SFP+ Slot	1	2	2	2
10GBASE-T RJ45 Port	1	-	1	1
PoE PD (powered device)	-	-	-	■

In this guide, the term **“Industrial Managed Media Converter”** refers specifically to the IXT-900-1X1T, IXT-900-2X, IXT-900-2X1T and IXT-900-2X1PD models.

To begin, open the box of the Industrial Managed Media Converter and carefully unpack its contents. The box should contain the following items:

Number Contents	Model			
	IXT-900-1X1T	IXT-900-2X	IXT-900-2X1T	IXT-900-2X1PD
Industrial Media Converter	■	■	■	■
Quick Start Guide Sheet	■	■	■	■
DIN-rail Kit	■	■	■	■
Wall-mount Kit	■	■	■	■
SFP Dust Cap	1	2	2	2

If any of these items are missing or damaged, please contact your dealer immediately. If possible, keep the carton and original packing materials to repack the product in the event that you need to return it to us for repair.

2. Requirements

The Industrial Managed Media Converter provides a remote web interface for management purposes. To further manage the device, you will need the following products.

- **Workstations** running Windows 7/8/10/11, macOS 10.12 or later, Linux Kernel 2.6.18 or later, or other modern operating systems are compatible with TCP/IP Protocols.
- Workstations are installed with Ethernet NIC (Network Interface Card).
- **Ethernet Port Connection**
 - **Network cables** -- Use standard network (UTP) cables with RJ45 connectors.
 - The PC mentioned above is installed with a **Web browser** such as Google Chrome, Mozilla Firefox or Microsoft Edge.



Note

To access the web interface of **IXT-900-2X**, use an **RJ45 SFP Transceiver**.



Note

If you are unable to access the Web interface of the Managed Media Converter, try turning off your anti-virus software or fire-wall and then try again.

3. Wiring DC Power Inputs

The 6-contact terminal block connector on the panel of the industrial Managed Media Converter is used for two DC redundant power inputs. Follow the steps below to insert the power wires.

1. Insert positive/negative DC power wires into Contacts 1/2 for Power 1, or Contacts 5/6 for Power 2.

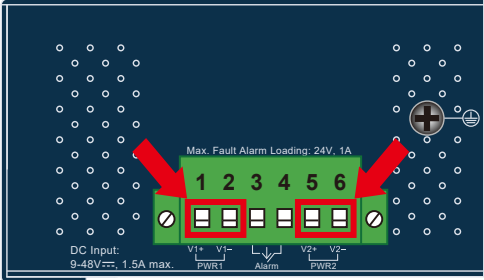


Figure 3-1: IXT-900 Series Upper Panel

2. Tighten the wire-clamp screws for preventing the wires from loosening.

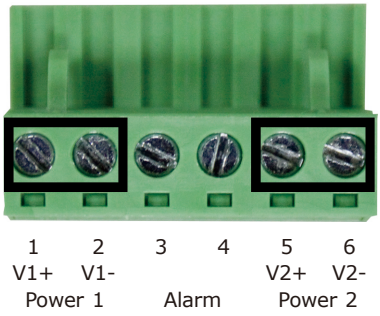


Figure 3-2: Power 1 & 2 Pins of Terminal Block Connector

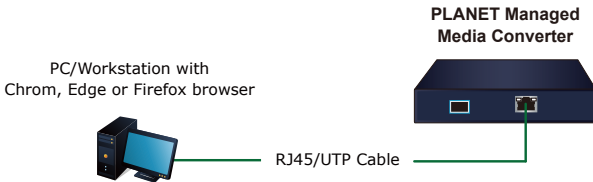


PWR1 and PWR2 must provide the **same DC voltage** while operating with dual power input.

4. Starting Web Management

The following steps show how to start up the **Web Management** for the Managed Media Converter. Note that the Industrial Managed Media Converter is configured through an Ethernet connection, so ensure that the manager PC is set to the same **IP subnet address**.

For example, if the default IP address of the Managed Media Converter is **192.168.0.100**, then the manager PC should be set to an IP address of **192.168.0.x** (where x is a number between 1 and 254, except 100), and the default subnet mask is 255.255.255.0.



4.1 Logging in to the Industrial Managed Media Converter

1. Use a modern Web browser to enter the default IP address **<https://192.168.0.100>** to access the Web interface.
2. To access the main screen of IXT-900 series, enter the default username "**admin**" and password "**admin**" (or the password you previously changed) when the login screen appears. Then, click "**Login**". The login screen is shown in Figure 1.

Default IP Address: **192.168.0.100**

Default Account: **admin**

Default Password: **admin**

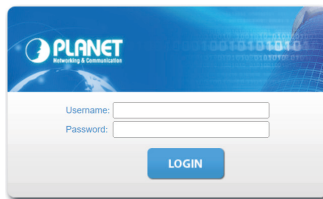


Figure 1. Web Login Screen of Industrial Managed Media Converter

After entering the username and password, the main web screen will appear, as in Figure 2, once logged in.



Figure 2. Web Main Screen of Industrial Managed Media Converter (Use IXT-900-2X1T as a representative)

The menu at the top of the web page provides access to all the commands and statistics offered by the Industrial Managed Media Converter. Each menu contains sub-menu items, as shown in **Figures 3 & 4** below.



Figure 3. Main Menu



Figure 4. Sub-menu

You can now use the web management interface to continue managing the Industrial Managed Media Converter. For more information, please refer to the user manual.



Note

For security reasons, **change and memorize the new password after the first setup.**

4.2 Saving Configuration via Web Interface

Save all applied changes and set the current configuration as the startup configuration after finishing the configuration. The system will automatically load the startup-configuration file upon reboot.

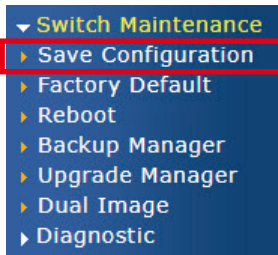
1. Click the Save icon on the top Menu bar.



Press the "Apply" button to save the configuration.

Configuration Manager	
Save Configuration	
Source File	<input checked="" type="radio"/> Running configuration <input type="radio"/> Startup configuration <input type="radio"/> Backup configuration
Destination File	<input checked="" type="radio"/> Startup configuration <input type="radio"/> Backup configuration
<input type="button" value="Apply"/>	

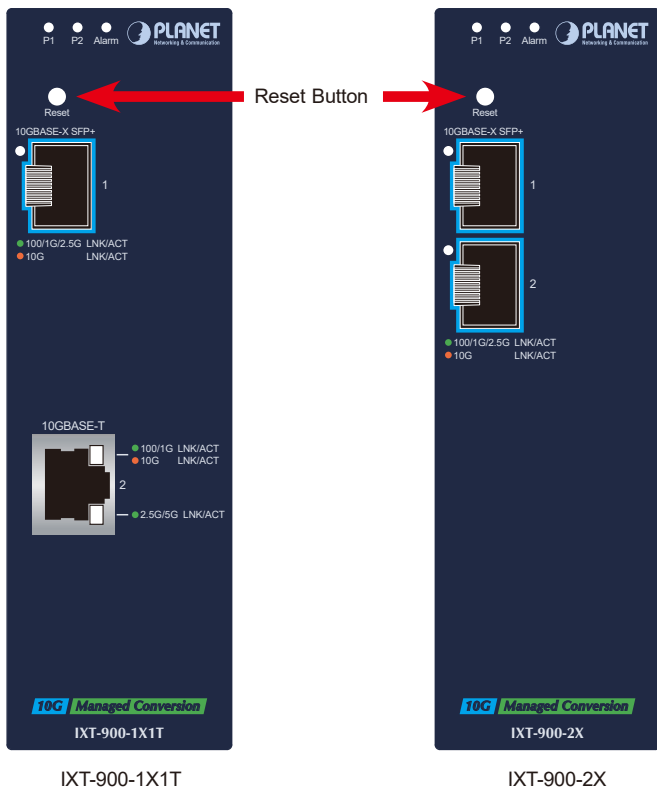
2. Another way to save the settings is to click Maintenance and then select Save Configuration.

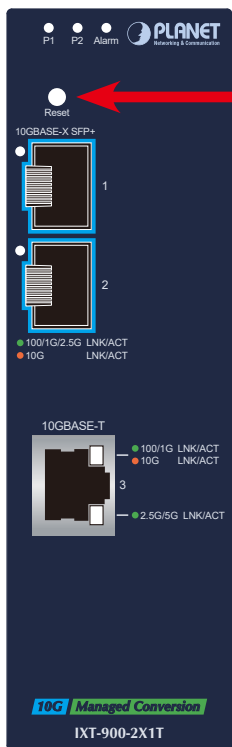


5. Restoring Default Configuration

If the IP address has changed or the admin password has been forgotten –

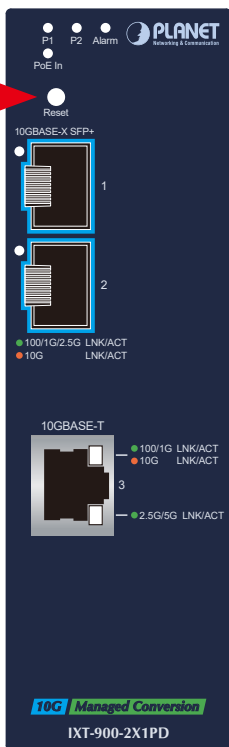
To reset the IP address to the default IP Address **"192.168.0.100"** or to reset the login password to default value, press the hardware-based reset button on the front panel for about **10 seconds**. After the device reboots, you can log in to the management web interface within the same 192.168.0.xx subnet.





IXT-900-2X1T

Reset Button



IXT-900-2X1PD

6. Customer Support

Thank you for purchasing PLANET products. Before contacting PLANET support team, please browse our online FAQ resource and User's Manual on the PLANET website to see if they can solve your issue. If you require further support information, please contact the PLANET support team.

PLANET online FAQs:

<https://www.planet.com.tw/en/support/faq>

Support team Email address:

support@planet.com.tw

User's Manual:

<https://www.planet.com.tw/en/support/downloads?&method=keyword&keyword=IXT-900&view=3#list>



(Please select your Media Converter model name from the Product Model drop-down menu.)

Copyright © PLANET Technology Corp. 2023

Contents are subject to revision without prior notice.

PLANET is a registered trademark of PLANET Technology Corp.

All other trademarks belong to their respective owners.